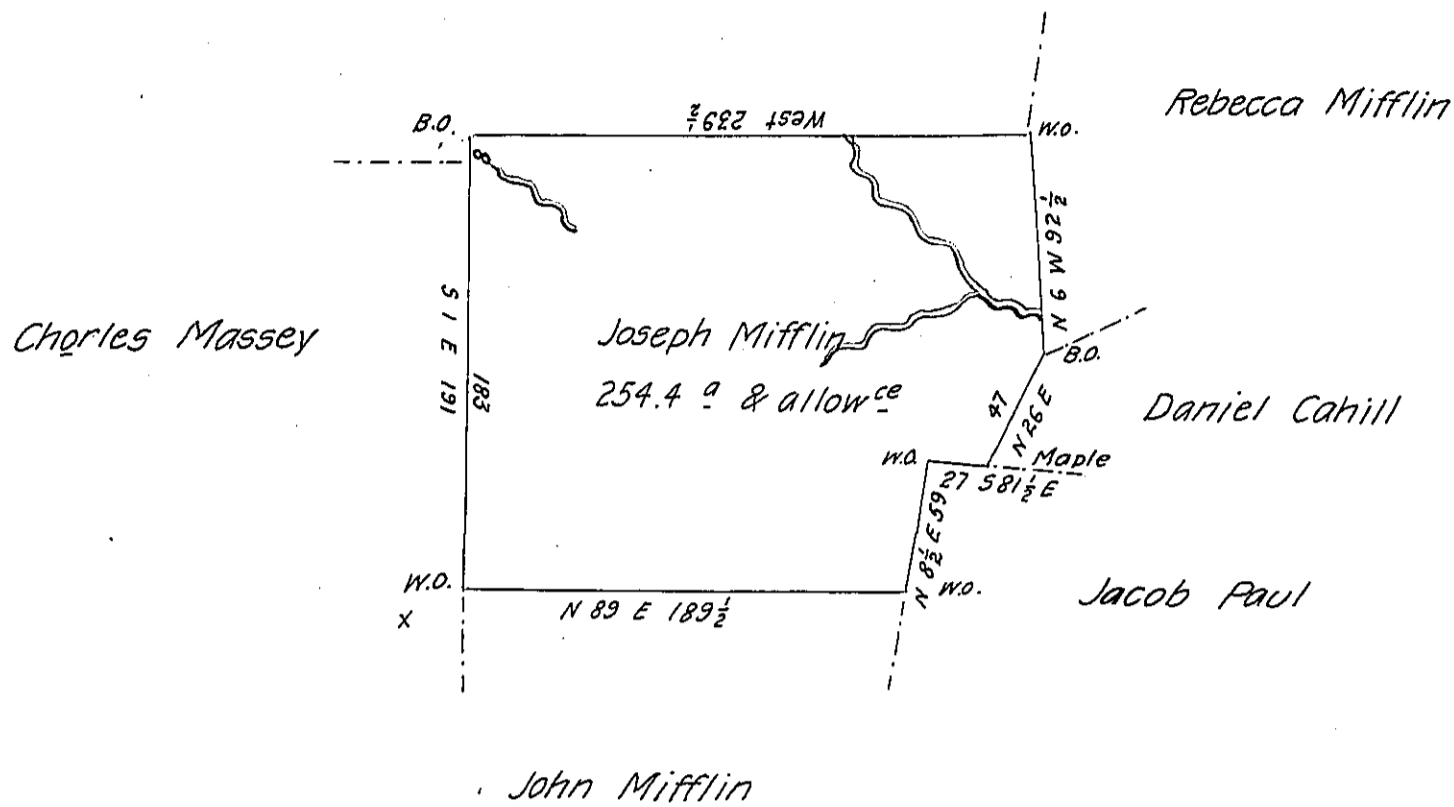


Jonathan Mifflin Jun^r



Survey'd to Joseph Mifflin on the 9th day of June 1786 the above described tract of two hundred & fifty four acres & four tenths of an acre & the Allowance of Six P. Cent Situate on the East Side of Blacklegs Creek adjoining Lands of John Mifflin & Cha^s Massey in Westmor-land County By warrant of the 2nd day of ~~June~~ March 1775

Joshua Elder D.S.

John Lukens Esq^r

S. Gen^l

IN TESTIMONY that the above is a copy of the original remaining on file in the Department of Internal Affairs of Pennsylvania, made conformably to an Act of Assembly approved the 16th day of February, 1833, I have hereunto set my Hand and caused the Seal of said Department to be affixed at Harrisburg, this fifteenth day of December 1905

Loac R. Brown
Secretary of Internal Affairs.